



Co-funded by the
Erasmus+ Programme
of the European Union

Physical Geology



UNIVERSITI
TEKNOLOGI
PETRONAS
energising futures

**Marine Coastal and Delta Sustainability for
Southeast Asia (MARE)**



- Contains “Physical Geology” course materials (for BSc. Petroleum Geoscience)
- Site URL: <https://ulearn.utp.edu.my/course/view.php?id=9772>
- Available in English.
- Modules:
 - Announcements
 - Overview
 - Course Syllabus
 - Teaching Methodology
 - Course Materials
 - Lecture Notes + Additional Resources
 - Test & Quiz
 - Statistics

Overview (Disclaimer)



Co-funded by the
Erasmus+ Programme
of the European Union



The screenshot shows the ULearn LMS interface. The top header includes the UTP logo and 'ULearn' text. The left sidebar contains navigation options: Course sections, Participants, Badges, Competencies, Grades, Home, Dashboard, Calendar, My courses, Private files, Content bank, and Accessibility settings. The main content area displays the course title 'QCB 1013 - WEEK 1' and a document titled 'ERASMUS+ MARE DISCLAIMER'. The disclaimer text is as follows:

DISCLAIMER

- These lecture materials are for the Marine Coastal and Delta Sustainability for Southeast Asia (MARE) (Project No. 610327-EPP-1-2019-1-DE-EPPKA2-CBHE-JP).
- This project has been funded with support from the European Commission. This publication reflects the views only of the authors, and the Commission cannot be made responsible for any use which may be made from the information contained herein.
- Students are reminded that any file or attachment shared with you by your course lecturer is SOLELY for educational purposes and/or your personal and private study ONLY, and therefore cannot be shared with or disseminated to anyone else or uploaded on any website without the permission or authorization of the copyright owner.

Course Syllabus



Co-funded by the
Erasmus+ Programme
of the European Union



ulearn.utp.edu.my/course/view.php?id=9772



Course sections

Participants

Badges

Competencies

Grades

Home

Dashboard

Calendar

My courses

Private files

Content bank

Accessibility settings

ANNOUNCEMENTS

COURSE SYNOPSIS

This course draws from all fields of geosciences to explore the evolution of Planet Earth.

Topics include: an introduction to earth materials (minerals, rocks, soils, and water); Earth's interior structure; geological processes in operation on and beneath the surface of the earth and their effects (weathering, erosion, deformation and geologic structures, earthquakes, plate tectonics, ocean basins, running water, ground water, glaciers, winds and deserts, coasts and shorelines); techniques of dating geological events.

COURSE CONTENT

- Introduction / Overview
- The Earth & Universe
- Plate Tectonics
- Geomorphology
- Rock cycle
- Hydrologic cycle
- Structural geology
- Time and geology
- Geohazards
- Earth energy and resources



← → ↻ 🔒 ulearn.utp.edu.my/course/view.php?id=9772 🔍 ☆ 🗨️ 🌐 ⚙️ 📁 👤 ⋮

UTP ULearn
Universiti Teknologi PETRONAS Virtual Learning Environment

- ☰ Course sections <
- 👤 Participants
- 🏆 Badges
- ★ Competencies
- 📖 Grades

- 🏠 Home
- 🕒 Dashboard
- 📅 Calendar
- 🏠 My courses <
- 📁 Private files
- 📁 Content bank

Accessibility settings

- Plate tectonics
 - Geomorphology
 - Rock cycle
 - Hydrologic cycle
 - Structural geology
 - Time and geology
 - Geohazards
 - Earth energy and resources

TEACHING METHODOLOGY ✎ Edit ▾ 👤 ☑

Main mode of teaching will conduct via active learning and online learning session.
Ulearn and MSTeams will act as the main medium of teaching and learning deliveries.

⊕ Add an activity or resource

QCB 1013 - WEEK 1 ✎ Edit ▾

ERASMUS+ MARE DISCLAIMER ✎ Edit ▾ ☑



ulearn.utp.edu.my/course/view.php?id=9772

UTP ULearn
Universiti Teknologi PETRONAS' Virtual Learning Environment

Course sections
Participants
Badges
Competencies
Grades
Home
Dashboard
Calendar
My courses
Private files
Content bank
Accessibility settings

QCB 1013 - WEEK 8

QCB 1013 - WEEK 8

Ladies & Gentlemen, Welcome back to UTP. Our class will commence from on Monday at 10 am via MSTeam.
Please find the MSTeam for your reference : <https://teams.microsoft.com/join/19%3a2dd0df81bf9240b393612e8f9dd4125b%40thread.tacv2/1620608220959?context=%7b%22id%22%3a%2284187be3-037e-41ec-889c-a150fe476432%22%2c%22oid%22%3a%22711bb6d0-d5d2-44f1-9901-f6499cc720df%22%7d>

Kindly refer to the video link below as we going to discuss about it during our class:

1. coast vs beach vs shore -

Example:

2. Difference between coast and shore? -

■ Lecture Notes: Coastal Environment

■ List of additional video:

1. coast vs beach vs shore - <https://www.youtube.com/watch?v=HUACs3UH9bk>
2. Difference between coast and shore? - <https://www.youtube.com/watch?v=uUTrfgrR--84>
3. How the Coast Works - <https://www.youtube.com/watch?v=3RauOeHkQk4>
4. Shoreline's geology - <https://www.youtube.com/watch?v=THEXzkZUFLU>
5. How do Ocean Waves Work? - https://www.youtube.com/watch?v=_LRc6k-clzE
6. Oceans: Waves & Shorelines - <https://www.youtube.com/watch?v=2Sp5mKT2ILI>
7. Coastlines - https://www.youtube.com/watch?v=tTYHZ7exBS0&list=P_LrhG2NtyHAZuPW5HP3cyenGGTUqUhumeQ&index=46
8. Beaches and Migrating Sand - <https://www.youtube.com/watch?v=vTe-SrRCxTk>



ulearn.utp.edu.my/course/view.php?id=9772

UTP ULearn
Universiti Teknologi PETRONAS Virtual Learning Environment

Course sections
Participants
Badges
Competencies
Grades
Home
Dashboard
Calendar
My courses
Private files
Content bank
Accessibility settings

+

QCB 1013 - WEEK 10

+

QCB 1013 - WEEK 10

Ladies & Gentlemen, Welcome back to UTP. Our class will commence from on Tuesday at 10 am via MSTeam.

Please find the MSTeam for your reference : <https://teams.microsoft.com/join/19%3a2dd0df81bf9240b393612e8f9dd4125b%40thread.tacv2/1620608220959?context=%7b%22Tid%22%3a%2284187be3-037e-41ec-889c-a150fe476432%22%2c%22Oid%22%3a%22711bb6d0-d5d2-44f1-9901-f6499cc720df%22%7d>

Kindly refer to the video link below as we going to discuss about it during our class:

1. What is Coastal Protection Structures & Its Importance -

What is Coastal Protection Structures & Its Importance

- Lecture Notes: Coastal Hazards & Protection
- List of additional video:
 - 1. What is Coastal Protection Structures & Its Importance - <https://www.youtube.com/watch?v=jxTnBGwGkMU>
 - 2. Coastal Erosion and the Methods Used to Reduce It - <https://www.youtube.com/watch?v=eeKpz8oD7E>

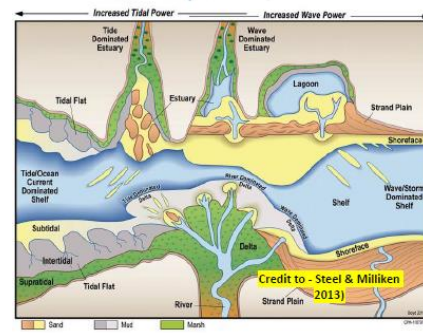


QCB 1013-PHYSICAL GEOLOGY

Co-funded by the Erasmus+ Programme of the European Union

Disclaimer: All materials were meant for teaching only. Figures / tables/ link share we taken from Google and other reliable internet sources for the sake of teaching purposes and not for any profit making purposes.

COASTAL MORPHOLOGY



Credit to - <https://blogs.adb.org/blog/data-climate-change-effective-weapon-fighting-india-s-coastal-erosion>



SHORELINES

TYPE OF HAZARDS

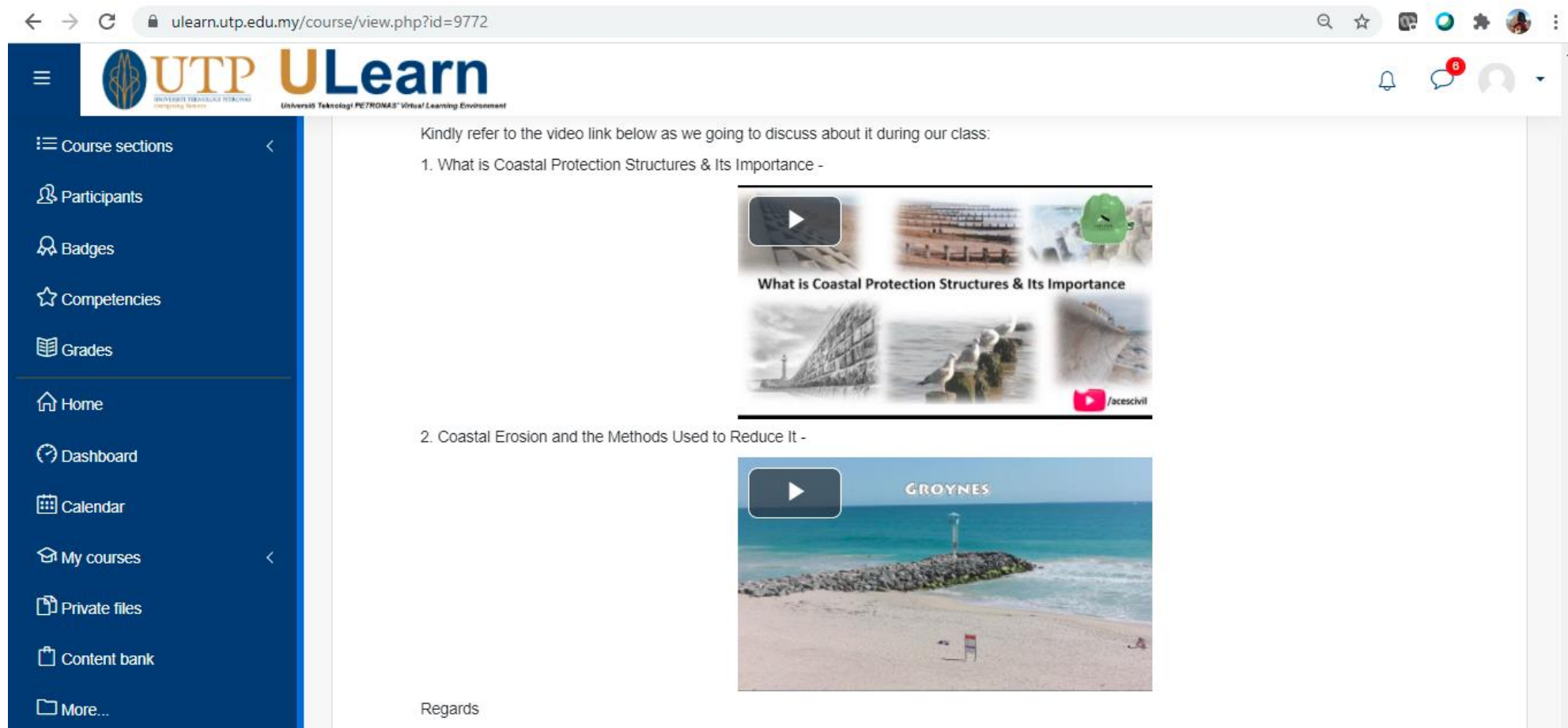
COASTAL HAZARDS

- Sea-level Rise**: Sea-level rise, quickened by climate change, will increase the height of tides and storm surges causing the floodplain to grow over time.
- Erosion**: Erosion (the loss of large amounts of sand) happens during storm events such as nor'easters, sou'easters, and hurricanes. "Critical erosion areas" are those that see an erosion rate above a certain threshold.
- Storm Events**: Storm events cause shoreline change through winds, wave action, and storm surge. Size, intensity, speed, and frequency of storm events determine the extent of shoreline modification and destruction.
- Flooding**: Tidal flooding and flooding caused by severe weather can inundate coastal areas. With higher sea levels, more frequent storm events will have the potential to cause increased flooding, resulting in public safety risks and property damage.

Credit to - <http://www.beachsamp.org/wp-content/uploads/2014/07/03-Coastal-Hazards-graphic.jpg>



Video 1: What is Coastal Protection Structures & Its Importance

Video 2: Coastal Erosion and the Methods Used to Reduce It



The screenshot shows a web browser window displaying a ULearn course page. The browser address bar shows the URL ulearn.utp.edu.my/course/view.php?id=9772. The page header includes the UTP ULearn logo and navigation icons. A blue sidebar on the left contains a menu with the following items: Course sections, Participants, Badges, Competencies, Grades, Home, Dashboard, Calendar, My courses, Private files, Content bank, and More... The main content area contains the following text and video links:

Kindly refer to the video link below as we going to discuss about it during our class:

1. What is Coastal Protection Structures & Its Importance -

2. Coastal Erosion and the Methods Used to Reduce It -


Regards

Test & Quiz



Co-funded by the
Erasmus+ Programme
of the European Union



Test

ulearn.utp.edu.my/course/view.php?id=9772

UTP ULearn

Course sections

Participants

Badges

Competencies

Grades

Home

Dashboard

Calendar

My courses

Private files

Content bank

More...

Accessibility settings

QCB 1013 TEST 01

QCB 1013 OPEN ENDED TEST 01

Ladies & Gentlemen,
This will be an open ended test 01.
The details of the test as per below .
Title: What is the potential threat and the counter measure of development on coastal area. Support your answers with any suitable reference/figure/diagrams.
* Maximum page - 3 pages
* Font - TNR, 12
* Deadline - 04/07/2021 @1700 hrs.
Note : Kindly write the assignment using your own words rather than copy and paste the info. Kindly quote properly any diagram/image/figure use.
*Kindly use your own words as the higher the similarity report generated, the lower your marks will be. Your similarity index reference as per below:

| Similarity Value | Marks |
|------------------|-------|
| 0-9 % | 10 |
| 10-19 % | 9 |
| 20-29 % | 8 |
| 30-39% | 7 |
| 40-49% | 6 |
| 50-above | 5 |

Regards,
MSS

Quiz

ulearn.utp.edu.my/course/view.php?id=9772

UTP ULearn

Course sections

Participants

Badges

Competencies

Grades

Home

Dashboard

Calendar

My courses

Private files

Content bank

More...

Accessibility settings

QCB 1013 - MAY 2021 - QUIZ 01

QCB 1013 - MAY 2021 - QUIZ 01

Restricted Available from **28 May 2021, 5:00 PM**

Ladies & Gentlemen,
Please find the link and password to your 1st quiz:
Link - joinmyquiz.com
Password - 3605 0266
You need to register to Quizizz before you can proceed to answer the quiz if you cant access the link given.
Upon completion screenshot your results and send it to my email shaufi.sokiman@utp.edu.my
Regards,

QCB 1013 - WEEK 5

QCB 1013 - WEEK 5

Ladies & Gentlemen



Questionnaires

ulearn.utp.edu.my/mod/feedback/show_entries.php?id=224003



Course sections

Participants

Badges

Competencies

Grades

Home

Dashboard

Calendar

My courses

Private files

Content bank

More...

Accessibility settings

QCB1013:Physical Geology - May 2021

Home > Courses > Faculty of Geoscience and Petroleum Engineering > QCB1013:Physical Geology - May 2021

QUESTIONNAIRE FOR ERASMUS+ MARE > QUESTIONNAIRE FOR ERASMUS+ MARE > Show responses

QUESTIONNAIRE FOR ERASMUS+ MARE

Overview Edit questions Templates Analysis Show responses

Anonymous entries (11)

Download table data as Comma separated values (.csv) Download

| Response number | 1. Your overall assessment | 2. In your opinion, has the... | 3. What aspects of the ... | 4. How do you evaluate the ... | 5. Was your personal level ... | 6. Does the Physical ... | 7. How do you generally | 8. How do you assess the | 9. How useful do you think ... | |
|-----------------|----------------------------|---|--|---|--------------------------------|--------------------------------------|--|---|--------------------------------|--|
| 1 | Good, interesting | Degree of perception of the course material | Availability of feedback from students | TLM is highly relevant to the Curriculum of | No, new knowledge was required | Yes, it requires, in part - Students | Multimedia modules in the Physical Geology | Navigation is intuitive, helps accelerate | Remote video lectures are very | |



Questionnaires Results

← → ↻ 🔒 ulearn.utp.edu.my/mod/feedback/analysis.php?id=224003 🔍 ☆ 🗨️ 🌐 ⚙️ 👤 ⋮

UTP **ULearn**
UNIVERSITI TEKNOLOGI PETRONAS *empowering learners* Universiti Teknologi PETRONAS Virtual Learning Environment

☰

- ☰ Course sections <
- 👤 Participants
- 👤 Badges
- ★ Competencies
- 📖 Grades
- 🏠 Home
- 🕒 Dashboard
- 📅 Calendar
- 🎓 My courses <
- 📁 Private files
- 📁 Content bank
- 📁 More...

🔔 8 🗨️

QUESTIONNAIRE FOR ERASMUS+ MARE

[Overview](#) [Edit questions](#) [Templates](#) **[Analysis](#)** [Show responses](#)

Export to Excel

Submitted answers: 11
Questions: 9

1. Your overall assessment of the attended Physical Geology (QCB1013) course. Was the course interesting for you?

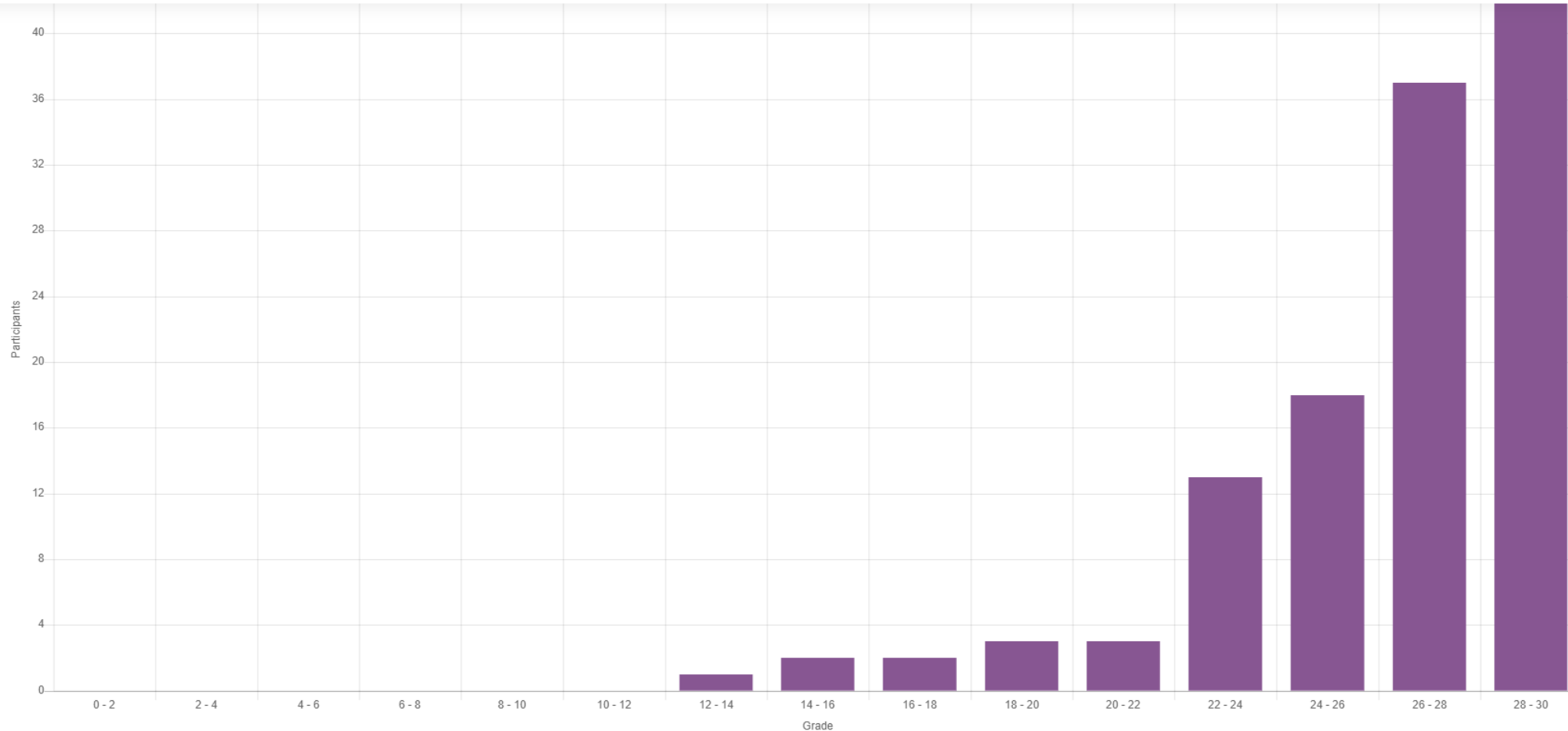
Responses

| Response Category | Count |
|-----------------------------|-------|
| Excellent, very interesting | 10 |
| Good, interesting | 1 |



Test Results

← → ↻ ulearn.utp.edu.my/mod/quiz/report.php?id=201237&mode=overview



Show chart data



Quiz Results

QUIZZZ

Search

Reports

Enter Code

Mr. S

Basic account

Upgrade to Super

Create

Explore

My library

Reports

Classes

Settings

More

Help

Assigned quiz

QCB1013 PHYSICAL GEOLOGY QUIZ 1 MAY 2021

May 28th 2021, 11:27 AM (a month ago)

View quiz

Flashcards

69%

Accuracy

?

30

Questions

14

Participant
Attempts

Participants

Questions

Overview

Topics



Print



Download

Sort By: Score

Email all parents



Insyirah Ismail (Insyirah...)

✓ 26

✗ 4

87%
Accuracy

22110
Score

Email to Parent



Wildon Faris (Faris Wild...)

✓ 24

✗ 6

80%
Accuracy

18480
Score

Email to Parent



Afrina Batrisyia (Afrina ...)

✓ 22

✗ 8

73%
Accuracy

18170
Score

Email to Parent



Halim Sutton (Halim Sut...)

✓ 26

✗ 4

87%
Accuracy

18050
Score

Email to Parent



faris amani (faris amani)

✓ 20

✗ 10

67%
Accuracy

17330
Score

Email to Parent



Afrina Atiqah (Atiqah)

✓ 20

✗ 10

67%
Accuracy

16870
Score

Email to Parent



THANK
YOU

Get Connected with



Scan the QR code or go to <https://bit.ly/2Ra323b>



www.utp.edu.my



UTPOfficial