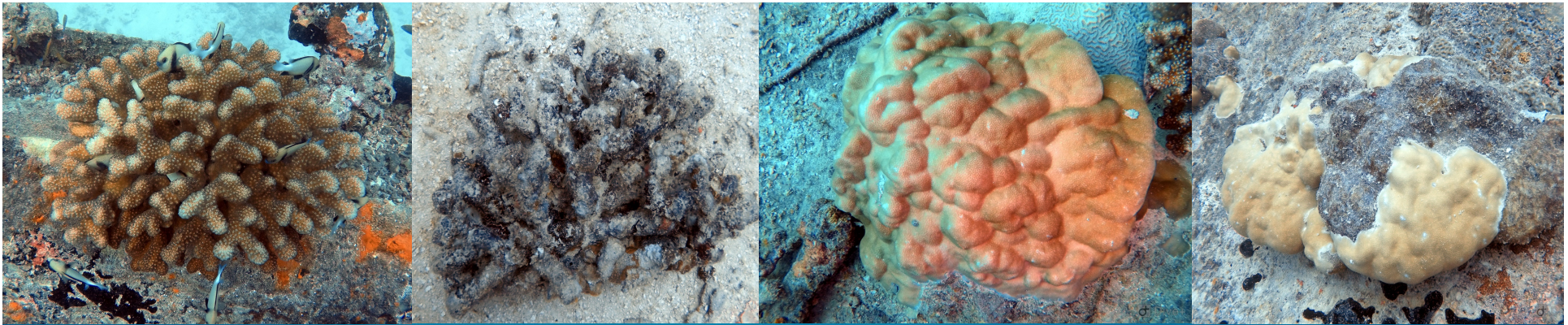


An underwater photograph of a coral reef. The water is a deep, clear blue. In the foreground, there is a large, intricate coral structure that has turned a pale, almost white color, indicating coral bleaching. To the left, there are other, more colorful coral formations in shades of brown, orange, and yellow. Several small, colorful fish are swimming around the coral. The overall scene illustrates the impact of coral bleaching on the reef ecosystem.

Auswirkungen des Korallensterbens auf den Menschen

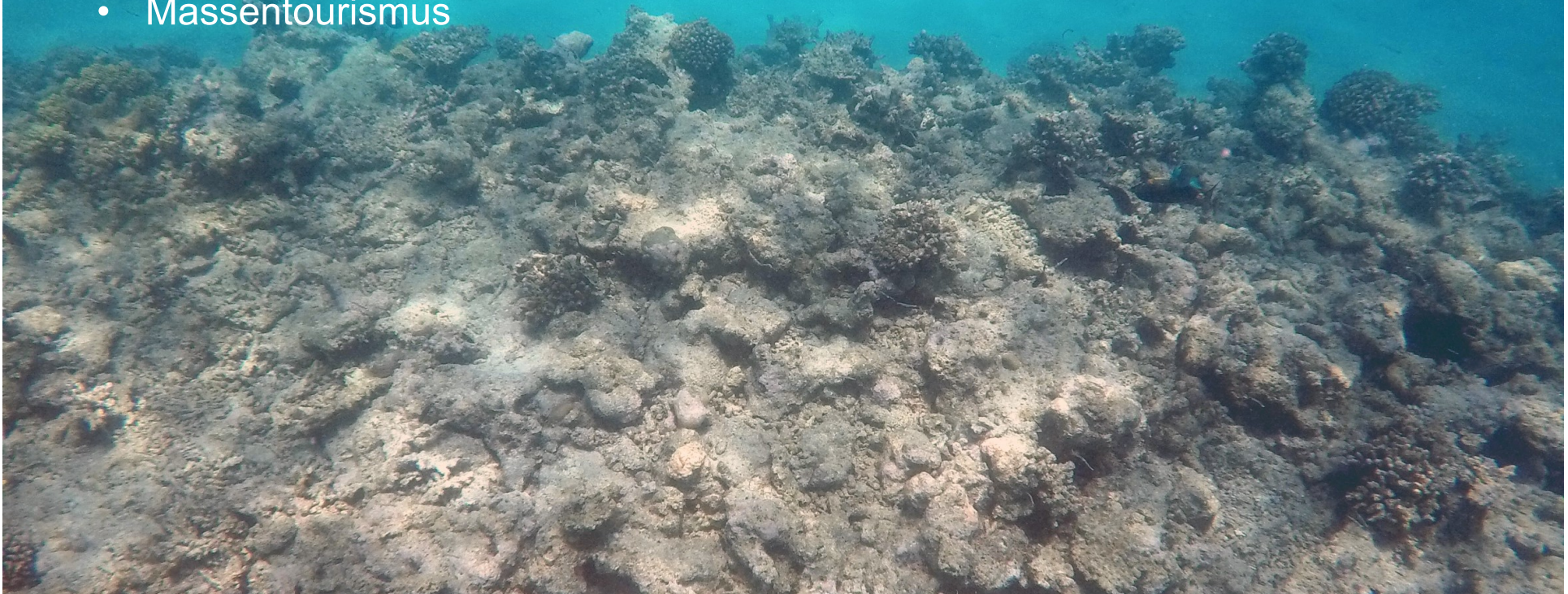
Beispiel:
Menjangan Island,
Indonesien



Warum bleichen/sterben Korallen?

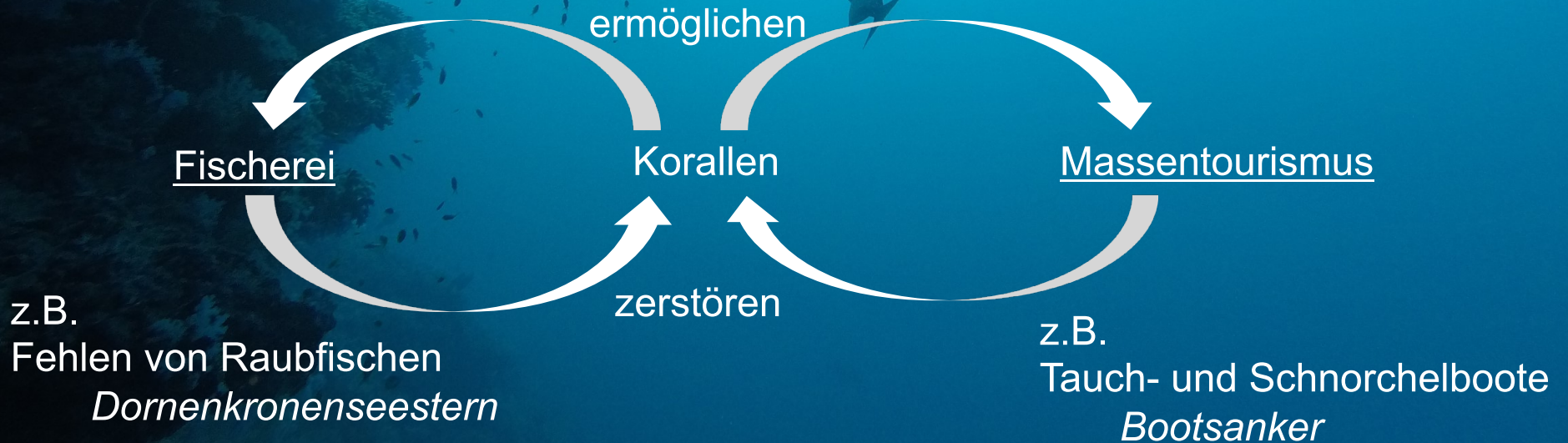
- viele Faktoren: Temperaturerhöhung, Ansäuerung der Meere, Konkurrenz mit nichtsymbiontischen Algen
- Durch direkten menschlichen Einfluss
 - Überfischung
 - Massentourismus

Zu viel Stress in einem zu kurzen Zeitraum!



Inwiefern sind Menschen davon betroffen?

konkretes Beispiel: Menjangan Island, NW Bali



Reduzierung invasiver Dornenkronenseesterne!



Boje statt Anker!



Referenzen

Interview *Biosphere Foundation Bali*, NW Bali (August 2018)

biospherefoundation.org

Ketututama – Head of Community-Based Marine Stewardship Programs

Nono Suparno – Teacher for Stewardship Education Programs

Kitty Currier – Coordinator of Marine Conservation Programs

Photos: Lisa Zimmermann 2018

